

INSTALLATION INSTRUCTIONS

37054

01 - 04 Nissan Frontier King Cab

Parts List :

QTY	(1) Hardware kit including :	
(1) Sidebar set (Left & Right)	(4) 1/2 x 1 1/2" Hex head bolt	(2) M10 Hex head nuts
(2) Front mounting bracket (left & right)	(4) 1/2 x 1 1/2" carriage head bolt	(1) Guide bolt
(2) Rear mounting bracket (left & right)	(2) 1/2 x 1 1/2" cut carriage head bolt	
(4) Spacer washer	(6) 1/2" Flat washer	
	(10) 1/2" Lock washer	
	(6) 1/2" Hex nut	
	(2) M10 x 30mm Hex head bolt	
	(2) 7/16" Flat washer	
	(2) 7/16" Lock washer	

Tools Required :

3/4" Socket	Ratchet
3/4" Wrench	17mm Socket

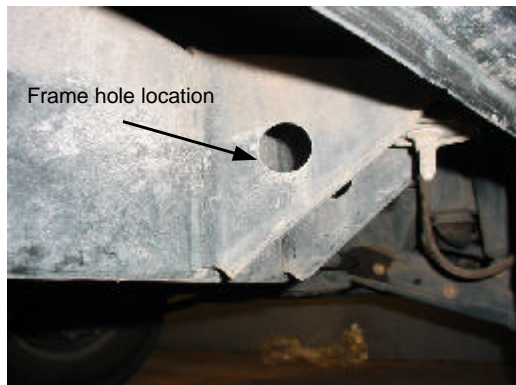
Instructions :

Approximated installation time: 30 min.

1. Read and understand instructions completely before beginning installation.
2. Sidebar set consist of a driver and passenger side. Be sure to determinate the correct side before installation.
3. Locate existing holes in the frame at front of vehicle shown in Picture 1 & 2.
4. To install front mounting bracket, insert into the obround a 1/2 x 1 1/2" cut carriage head bolt, rotate it 1/4 counterclockwise to retain the head of the bolt, then secure the bracket to the bolt using 1/2" flat & lock washer and hex nut. Picture 3. Secure to the other hole using a 1/2 x 1 1/2" carriage head bolt, lock washer, spacer washer and hex nut. Picture 4. Leave loose.
5. To install rear mounting bracket, locate the existing holes in the frame at rear of vehicle as shown in Picture 5. Attach mounting bracket to frame using a 1/2 x 1 1/2" carriage head bolt, lock washer, spacer washer and hex nut. Bolt to the threaded hole using a M10 x 30mm hex head bolt and 7/16" flat and lock washer. Leave loose. Picture 6 & 7.**Note:** Some models may not have the factory welded nuts on the inside of frame. If this is the case you must use the guide bolt to insert the M10 bolt with a 7/16" lock washer using the supplied 7/16" flat washer and M10 nut.
6. Place the sidebar up to the mounting brackets and bolt to the main and auxiliary mounting brackets using the 1/2 x 1 1/2" hex head bolt, flat and lock washer. Leave loose.
7. Make any final adjustments to the alignment of the sidebar and tighten all bolts. Repeat for the opposite side.
8. You may need to re-tighten the bolts periodically.

Assembly Diagram :

Picture 1



Picture 2



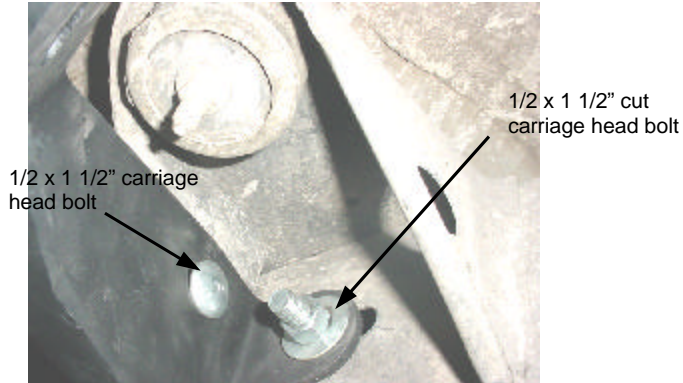
Insert here a 1/2 x 1 1/2"
cut carriage head bolt

INSTALLATION INSTRUCTIONS

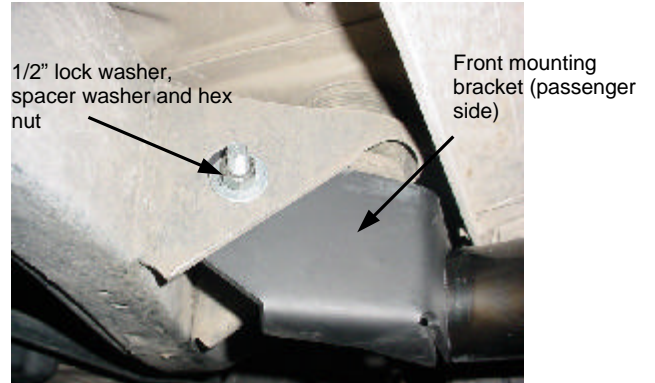
37054

01 - 04 Nissan Frontier King Cab

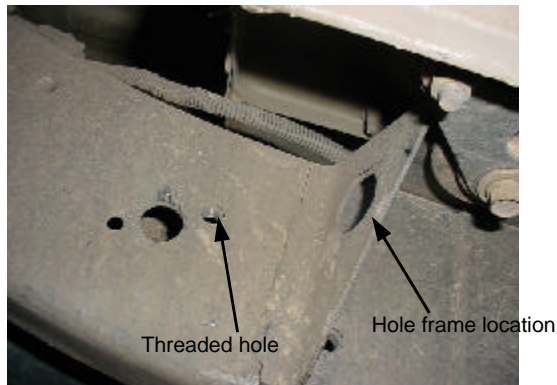
Picture 3



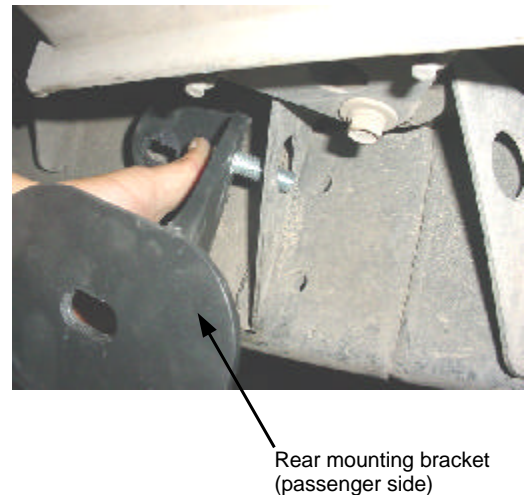
Picture 4



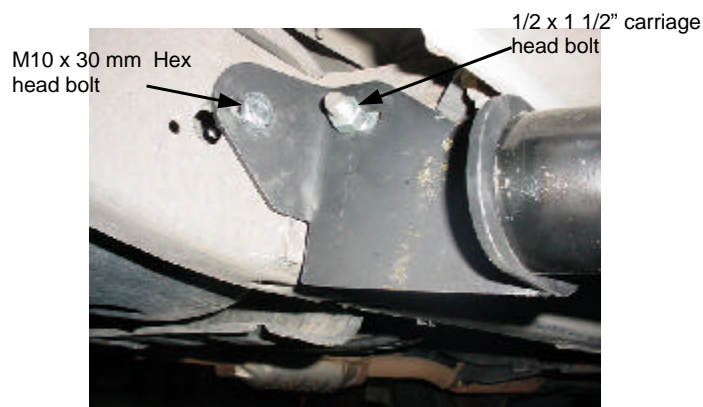
Picture 5



Picture 6



Picture 7



Cleaning and care instructions :

Protect the finish with a non-abrasive automotive wax, (e.g. Pure Carnuba) on a regular basis. The use of any soap, polish, or wax that contains an abrasive is detrimental to the finish, as the compounds scratch the finish and cause corrosion.